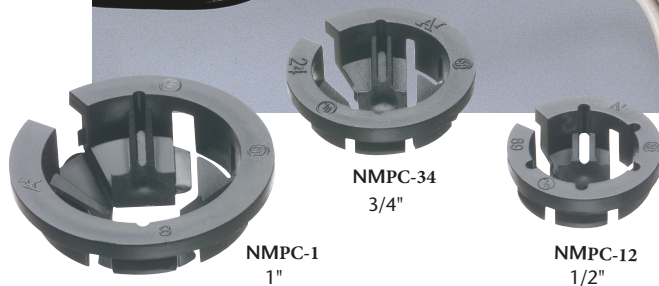


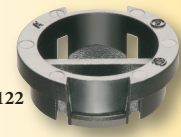
Black Button™ NM Cable Connectors

Made in USA 

Non-metallic • Easy, Push-in Installation



NEW!



NMPC-122
1/2"

Save money with our New non-metallic **Black Button™** NM cable connectors. They're the *lowest cost* NM cable connectors on the market, and the fastest to install! Simply push the connector into the knockout, and you're done.

Listed for single or multiple cables, Arlington's Black Button connectors offer smooth, easy cable insertion **into a single opening** while exceeding UL and CSA pullout requirements.

- Removable, reusable
- 1/2", 3/4" and 1" trade sizes
- UL/CSA Listed



Individual openings in NMPC-122 hold two cables separately

Our new 1/2" NMPC-122 holds one or two cables, in **two separate openings**.

- **One or two 12/2**
- **One or two 14/2, or one 12/2 and one 14/2**

Use a screwdriver to remove NM942 from box. It's reusable!



**Service
Warehouse**

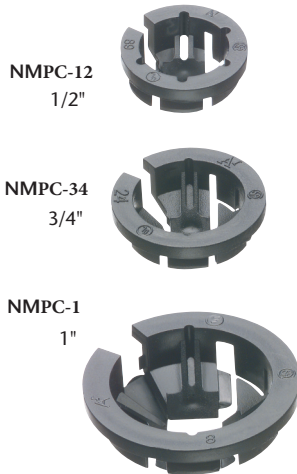
Black Button™ NM Cable Connectors

Made in USA 

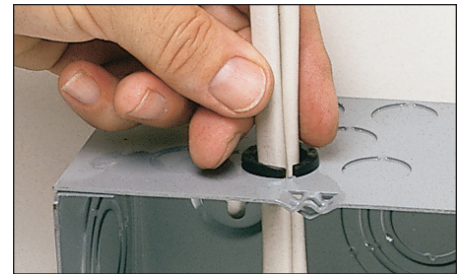
Lowest Cost NM Cable Connector • Easy, Push-in Installation

- Listed for one or two cables
- Easy installation
- Smooth, easy cable insertion
- Secure hold on cable – exceeds UL pullout tests

For multiple cable installations:
Insert **TWO** cables together or individually into NM94, NM95 or NM96. Add a second cable without removing the first.

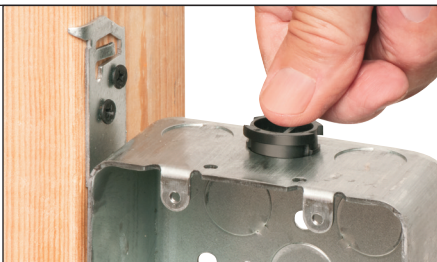


1 Push the NM cable connector into the knockout with light finger pressure.



2 Install one or two cables, fast! Push the NM cable(s) into the connector to the desired length.

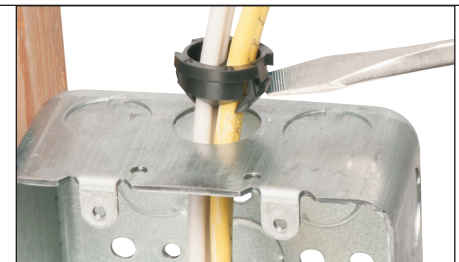
CATALOG NUMBER	UPC/DCI/NAED MFG #01 8997	DESCRIPTION/SIZE NM Cable Connector with SINGLE opening	KO SIZE	CABLE RANGES	UNIT PKG	STD PKG
NMPC-12	NM94	3/8"	1/2"	One 12/2 to 10/2 One 14/2/2 Two 14/2 to Two 10/2 Two 14/3 to Two 12/3 One 14/2 and One 12/2 One 14/2 and One 10/2 One 12/2 and One 10/2 One 14/3 and One 12/3	100 250	1000 1000
NMPC-34	NM95	3/4"	3/4"	One 14/2 to 6/2 One 14/3 to 6/3 One 14/2/2 Two 14/2 to Two 10/2 Two 14/3 to Two 10/3 One 14/2 and One 12/2 One 14/2 and One 10/2 One 12/2 and One 10/2 One 14/3 and One 12/3	50	500
NMPC-1	NM96	1"	1"	One 4/3 to 8/3 One 6/2 to 4/2	25	250



1 Push connector into KO with light finger pressure.



2 Insert cable(s) into individual openings.



3 To remove from KO...Slip screwdriver under connector and twist.



CATALOG NUMBER	UPC/DCI/NAED MFG #01 8997	DESCRIPTION/SIZE NM Cable Connector with TWO individual openings	KO SIZE	CABLE RANGES	UNIT PKG	STD PKG
NMPC-122	NM942	3/8"	1/2"	One or Two 14/2 One or Two 12/2 One 14/2 and One 12/2 One or Two 10/2	100 250	1000 1000



NEW!
NMPC-122 (NM942)
1/2"

Distributed by

THE SERVICE WAREHOUSE, INC.

www.TheServiceWarehouse.com